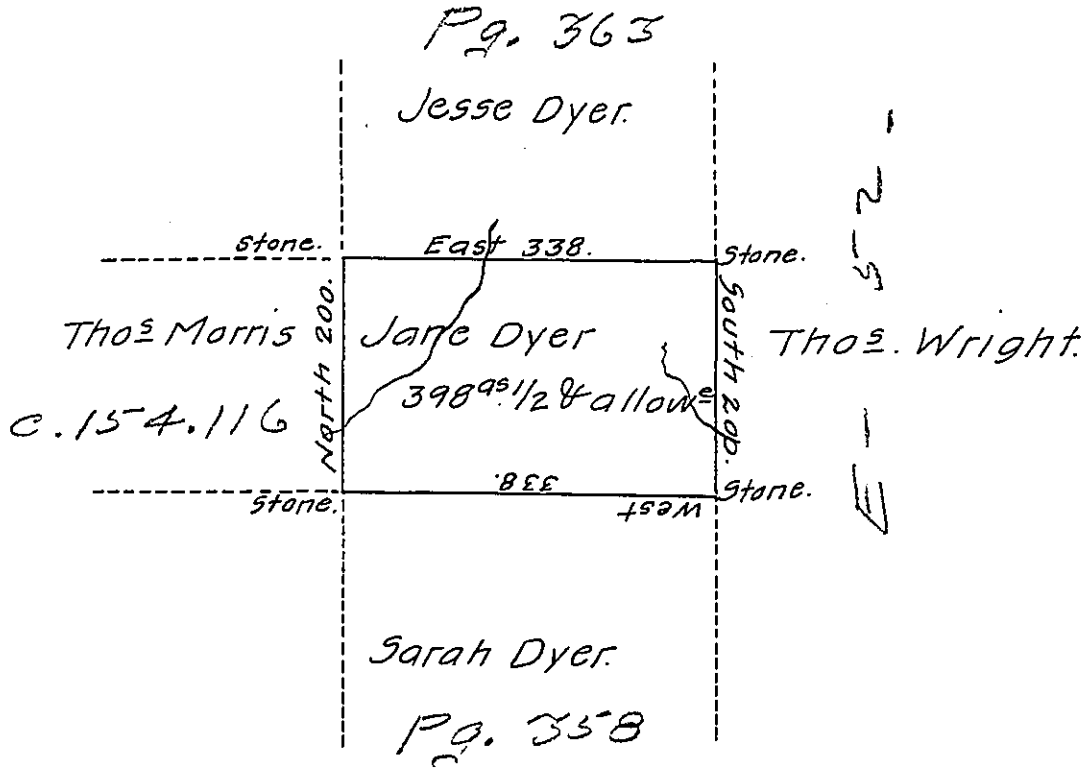


Denison-
Luzerne



Draft of a tract of land called— Situate on the waters of Lehi-Joining Land Surveyed for Sarah Dyer and others in the County of Luzerne containing Three hundred and ninety eight acres $\frac{1}{2}$ and allowance of six $\frac{1}{2}$ cent. for roads &c. Surveyed for Jane Dyer the 11th. Day of June, 1792 in pursuance of a warrant dated the 4th Day of April, 1792.

To Daniel Brodhead, Esq^r, } by Wm. Gray, D.S.
SURV^r Genl. }

IN TESTIMONY that the above is a copy of the original remaining on file in the Department of Internal Affairs of Pennsylvania, made conformably to an Act of Assembly approved the 16th day of February, 1833, I have hereunto set my Hand and caused the Seal of said Department to be affixed at Harrisburg, this...seventeenth...day of...July...1911.

Henry Houck
Secretary of Internal Affairs.